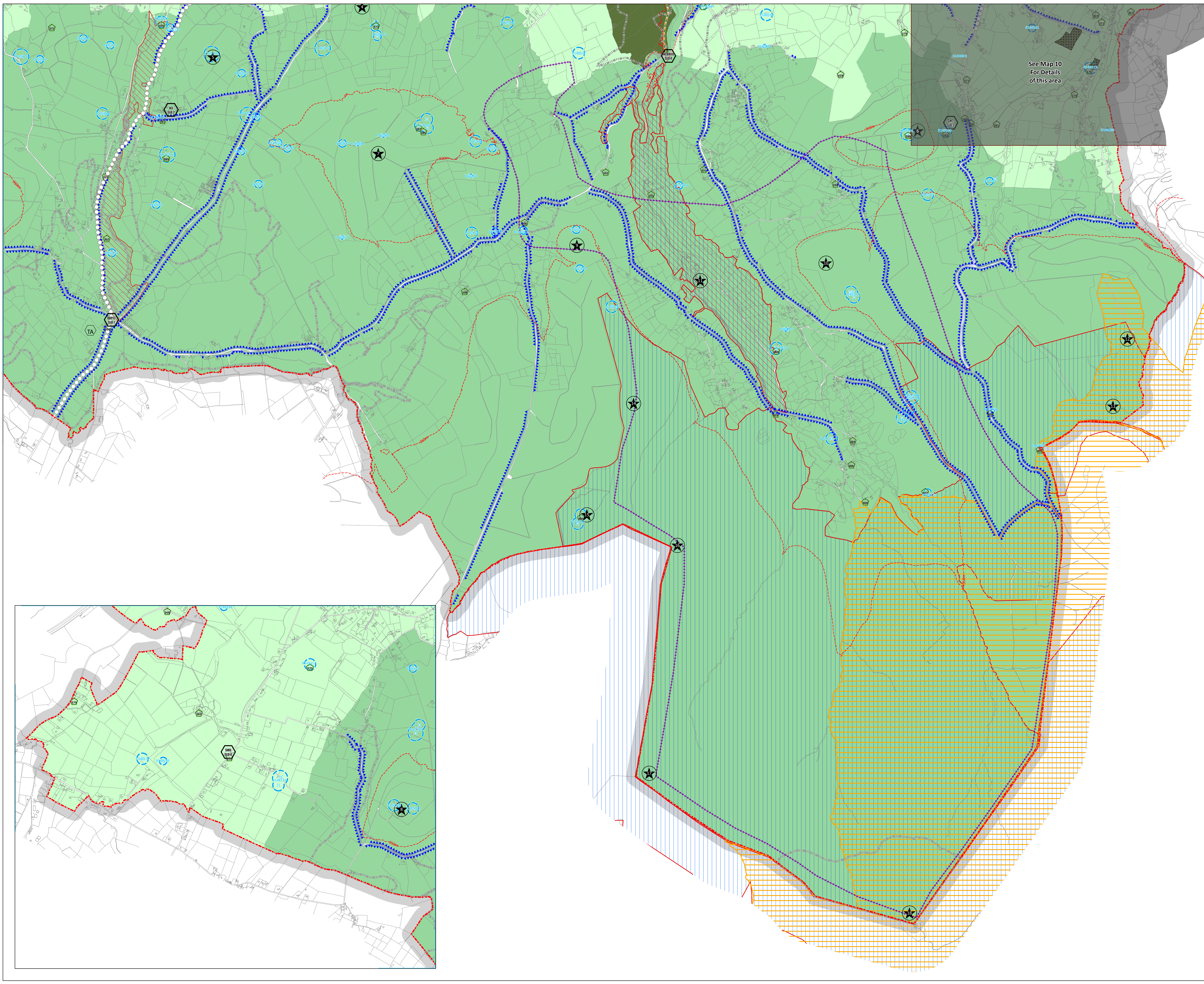


See Map 10
For Details
of this area



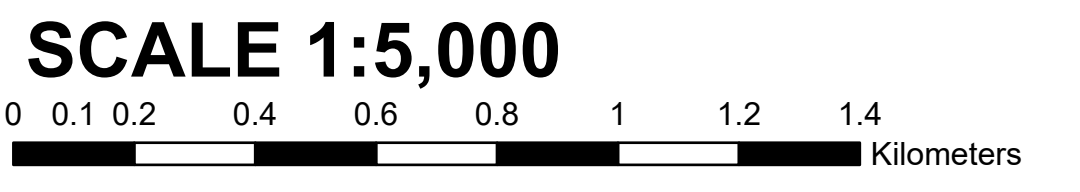
USE ZONING OBJECTIVES

- Objective RES To protect and/or improve residential amenity
- Objective RES-N To provide for new residential communities in accordance with approved area plans
- Objective SDZ To provide for strategic development in accordance with approved planning schemes
- Objective REGEN To facilitate enterprise and/or residential-led regeneration subject to a development framework or plan for the area incorporating phasing and infrastructure delivery.
- Objective TC To protect, improve and provide for the future development of Town Centres
- Objective MRC To protect, improve and provide for the future development of a Major Retail Centre
- Objective DC To protect, improve and provide for the future development of District Centres
- Objective VC To protect, improve and provide for the future development of Village Centres
- Objective LC To protect, improve and provide for the future development of Local Centres
- Objective RW To provide for and consolidate retail warehousing
- Objective EE To provide for enterprise and employment related uses
- Objective OS To preserve and provide for open space and recreational amenities
- Objective HA (LV, DV, DM) To protect and enhance the outstanding natural character and amenity of the Liffey Valley, Dodder Valley and Dublin Mountains areas
- Objective RU To protect and improve rural amenity and to provide for the development of agriculture

Specific Objectives

- Proposed School
- Seveso Sites
- Specific Local Objectives
- Specific Local Objective Boundary
- To protect and / or provide for a Burial Ground
- To Provide For Traveller Accommodation (indicative sites)
- Contour Lines
- SDZ Planning Scheme Boundaries
- County Boundary
- Transportation**
 - Transport Junctions
 - Road Proposals -- Long Term
 - Road Proposals -- 6 Year
 - Long Term Higher Capacity Public Transport Route
 - Cycleways
- Conservation**
 - Protect and Preserve Significant Views
 - Prospects
 - Tree Preservation Order
 - Tree Preservation Order Boundary
 - Record of Protected Structures (See Written Statement)
 - Architectural Conservation Areas
 - Sites and Monuments Record
 - Sites and Monuments Record Zone of Notification
 - Bohernabreena Reservoir Catchment
 - Sites of Geological Interest
 - Special Protection Areas
 - Special Areas of Conservation
 - Proposed Natural Heritage Areas (pNHA)
 - Special Amenity Area Order

Note:
The lines of the Transport Proposals shown on this map are diagrammatic only and are subject to change during the detailed design process.
Ordnance Survey Ireland Licence No. 2021/23/CC/M/South Dublin County Council



Land Use Planning and Transportation Department